

Welcome to the

# RESET

Capgemini  
Innovation  
Day | 2020

Capgemini 





# Cybersecurity Experience

Enabling Digital Transformation

Frans van Meel – Chapter Lead Cyber Security & Privacy  
(Capgemini Cybersecurity Unit)

# What is a Factory of the Future?

All the Factory of the Future use cases have something in common

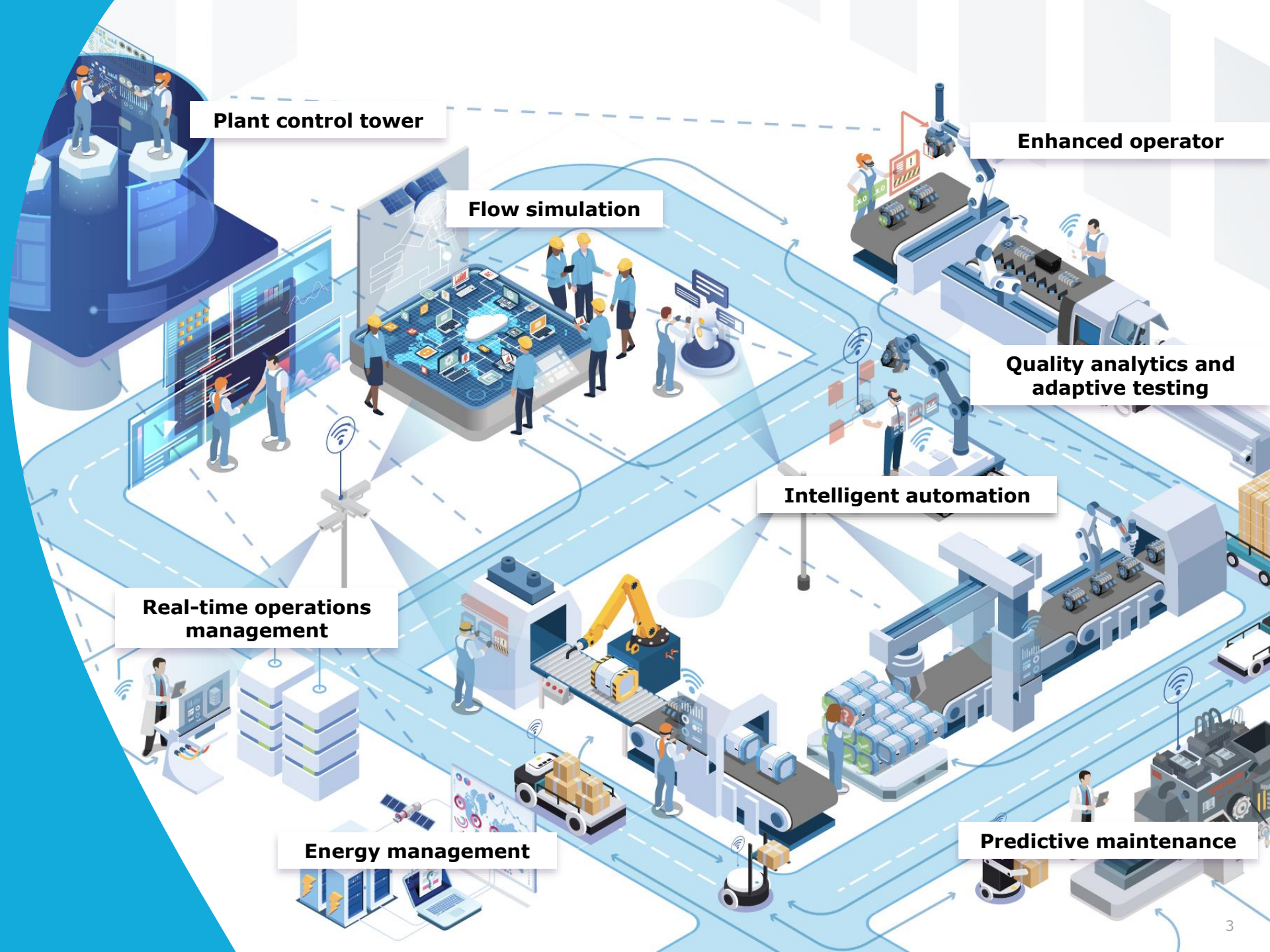
## It's all about data...

... accurate and timely data,

... feeding context specific analytics,

... to create a digital twin used to anticipate issues and improve performance in a "closed loop".

**And Security & Privacy by design!**





**Start with a use case!**



USE  
CASES

PLATFORM  
CAPABILITIES



INTEGRATED  
CLOUD/EDGE  
FOUNDATION

Predictive maintenance

Intelligent automation

Energy management



  
Data platform  
powered by  
Azure



## Application development

Role and context specific insights for real time performance management.



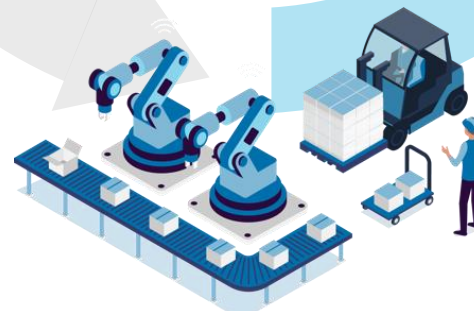
## Data management and analytics

From asset specific predictive analytics to overall plant performance.



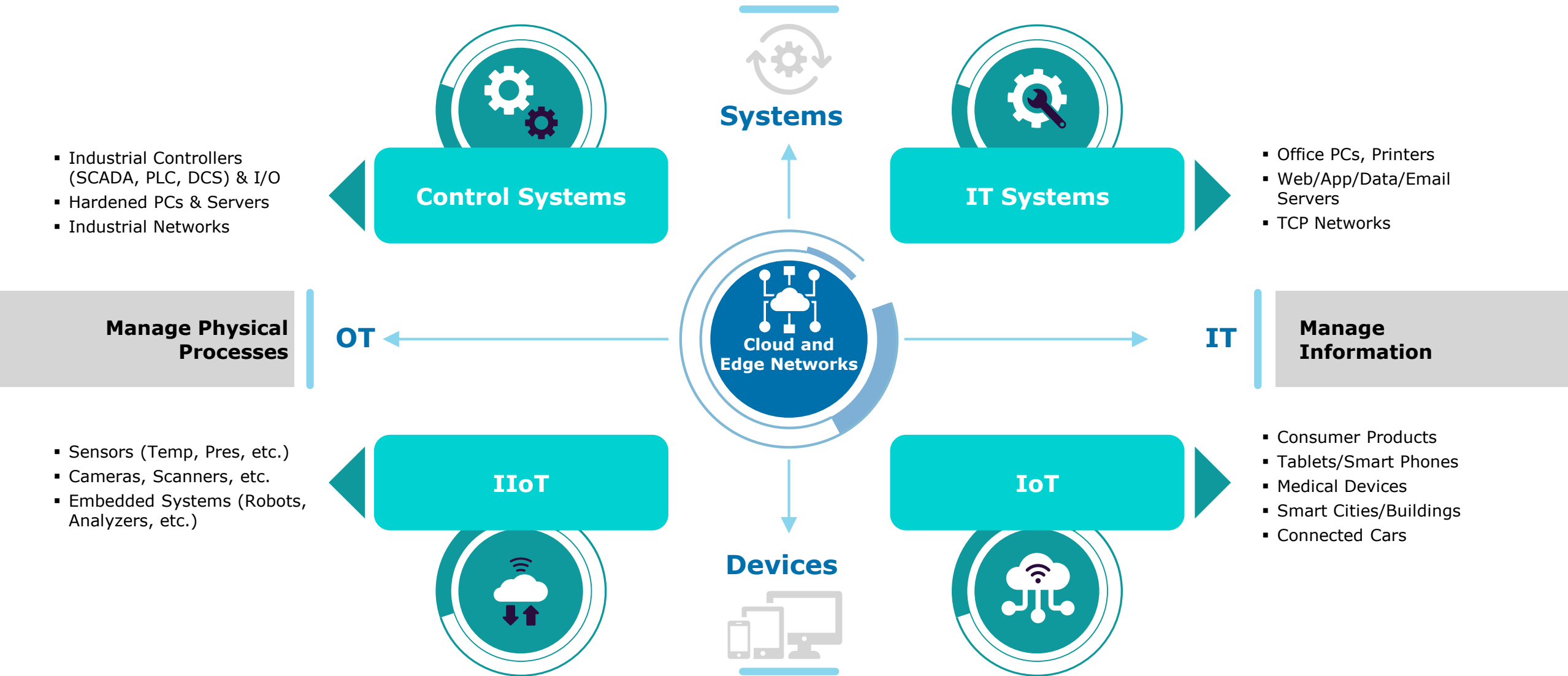
## Connectivity and integration

A unified view of your operations based on contextualized real time data.





# It's Time for Converged OT/IT/IOT & Cloud Security



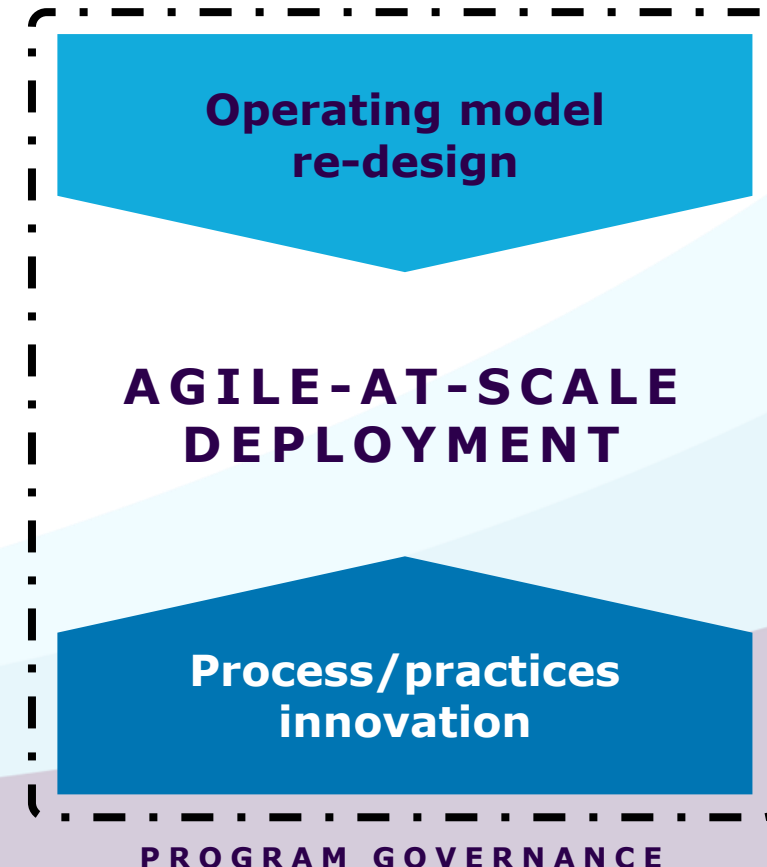


## Digital Trust by Design

**enabling organizations to take privacy, security and data-ethics into account early in the development process and throughout the lifecycle**

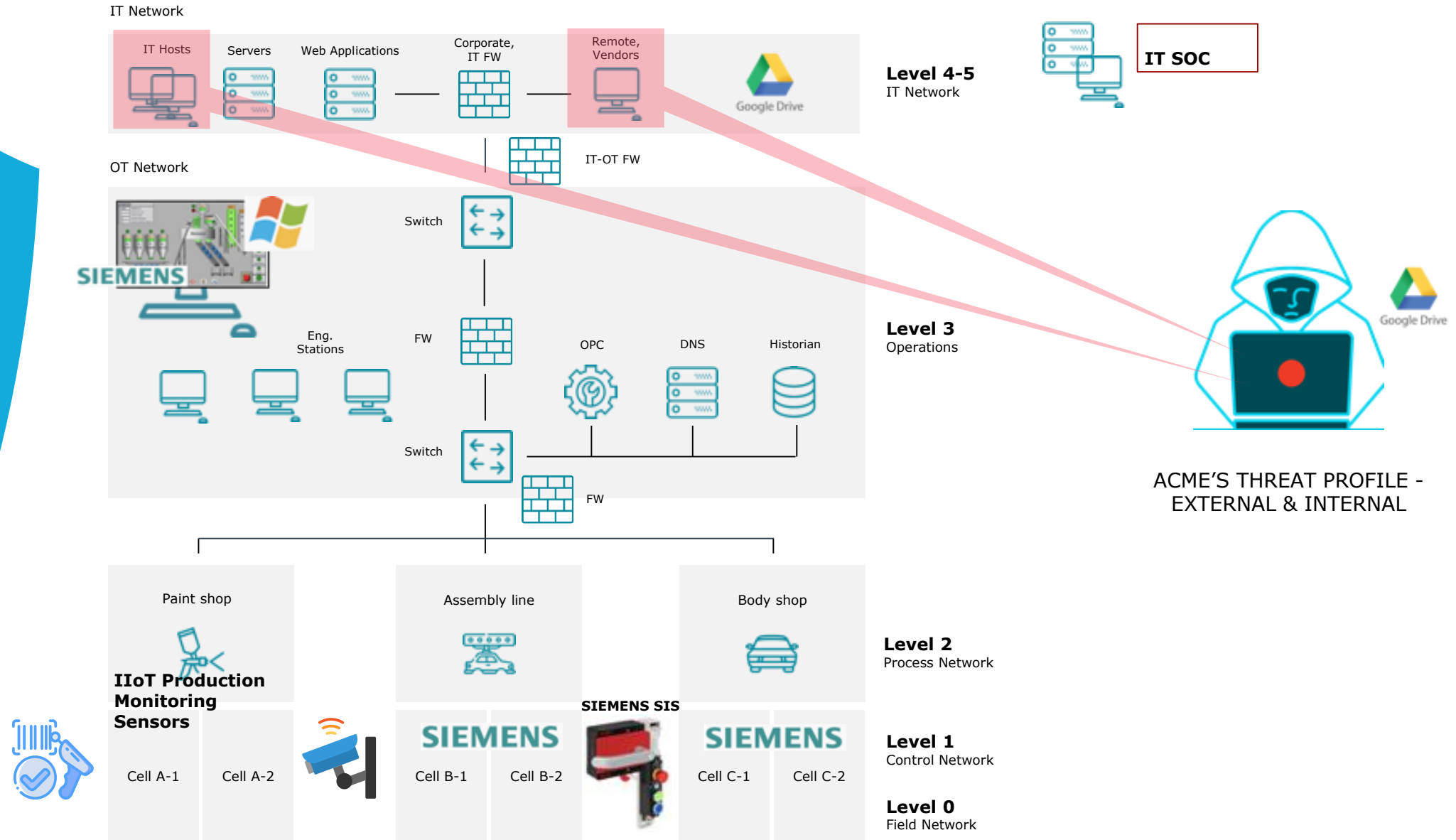


**Covering the key digital elements that consumers associate with Trust**





# ACME AUTOMOTIVE MANUFACTURING PLANT - SCENARIO





# Cybersecurity Experience Center: Transforming risks into business advantage



## **Cybersecurity Experience Center capabilities**

The Utrecht CEC prepares C-level executives and security professionals for cybersecurity incidents with immersive simulations.

**Immersive Experience:** The CEC provides immersive and dynamic simulations in various settings, including a SOC, an OT/SCADA control room, and a boardroom for the executive level.

**Advanced Attack Simulations:** With the Capgemini Cyber Range, multi-range and multi-user simulating physical infrastructures are offered in a virtual environment. It has the processing power to replicate any environment, ranging from office endpoints, to industrial SCADA systems, providing teams with a realistic setting.

**Realistic scenarios:** Realistic scenarios are designed fine-tuned to client environments and business needs.

**Training Grounds:** The CEC provides three rooms—the Demo SOC, the Industrial-Control room and the executive board room—to provide participants with a realistic experience.



**People matter, results count.**

This presentation contains information that may be privileged or confidential and is the property of the Capgemini Group.

Copyright © 2020 Capgemini. All rights reserved.

## About Capgemini

Capgemini is a global leader in consulting, digital transformation, technology, and engineering services. The Group is at the forefront of innovation to address the entire breadth of clients' opportunities in the evolving world of cloud, digital and platforms. Building on its strong 50-year heritage and deep industry-specific expertise, Capgemini enables organizations to realize their business ambitions through an array of services from strategy to operations. A responsible and multicultural company of 265,000 people in nearly 50 countries, Capgemini's purpose is to unleash human energy through technology for an inclusive and sustainable future. With Altran, the Group reported 2019 combined global revenues of €17 billion.

Visit us at

[www.capgemini.com](http://www.capgemini.com)